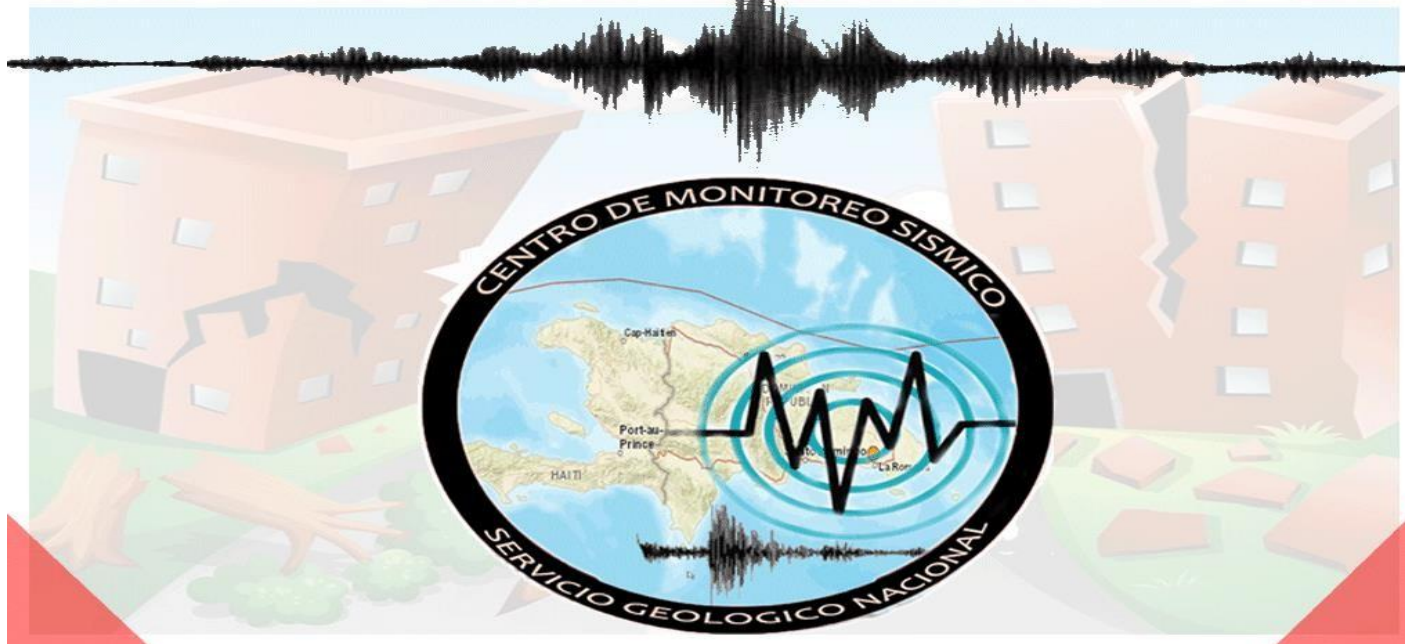




SERVICIO GEOLOGICO NACIONAL  
REPUBLICA DOMINICANA



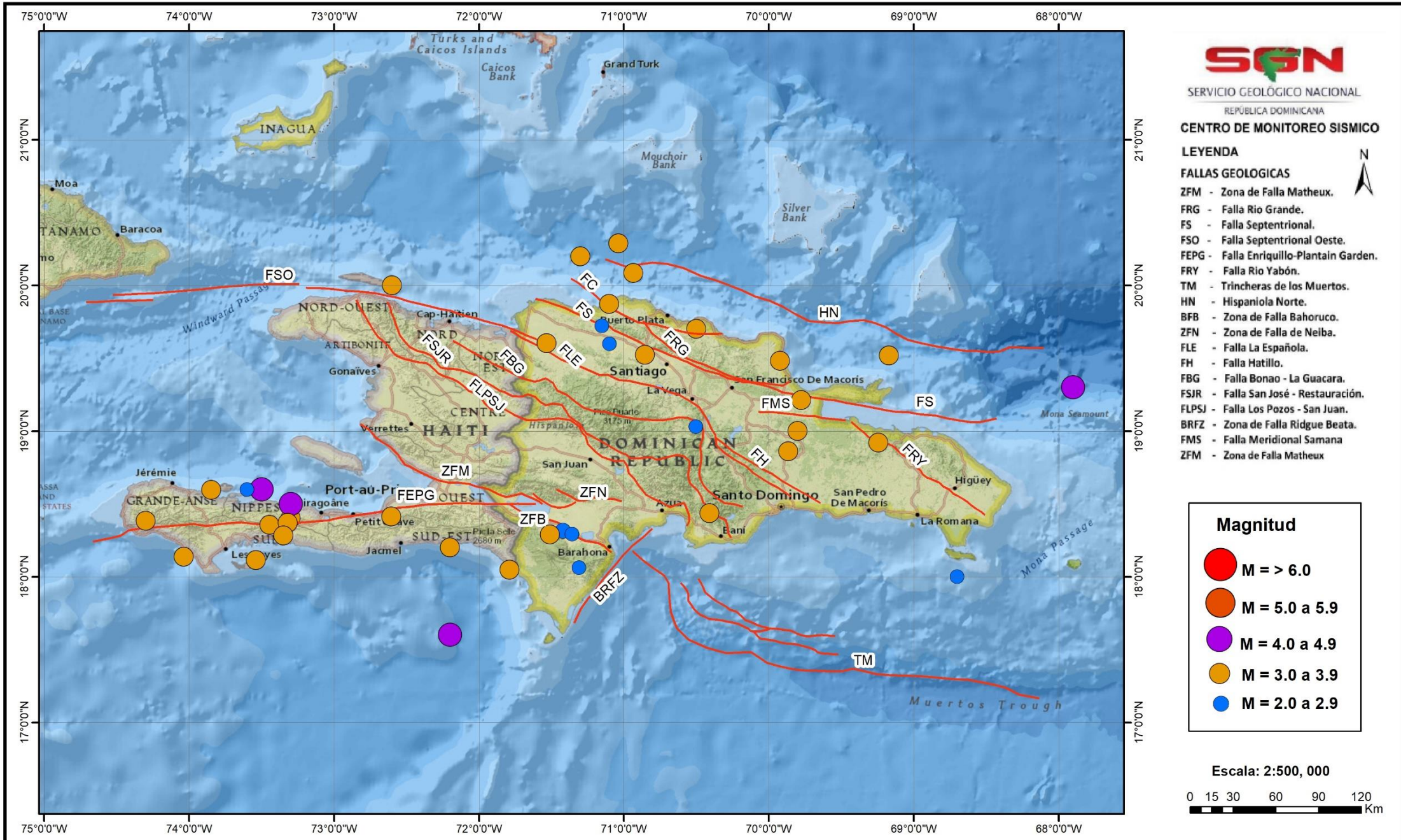
# INFORME DE SISMICIDAD



# Registro de actividad sísmica

## Periodo

### (01/02/2022 – 14/02/2022)



**SGN**  
SERVICIO GEOLÓGICO NACIONAL  
REPUBLICA DOMINICANA

CENTRO DE MONITOREO SISMICO

LEYENDA

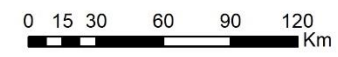
FALLAS GEOLOGICAS

- ZFM - Zona de Falla Matheux.
- FRG - Falla Rio Grande.
- FS - Falla Septentrional.
- FSO - Falla Septentrional Oeste.
- FEPG - Falla Enriquillo-Plantain Garden.
- FRY - Falla Rio Yabón.
- TM - Trincheras de los Muertos.
- HN - Hispaniola Norte.
- BFB - Zona de Falla Bahoruco.
- ZFN - Zona de Falla de Nelba.
- FLE - Falla La Española.
- FH - Falla Hatillo.
- FBG - Falla Bonao - La Guacara.
- FSJR - Falla San José - Restauración.
- FLPSJ - Falla Los Pozos - San Juan.
- BRFZ - Zona de Falla Ridgwe Beata.
- FMS - Falla Meridional Samana
- ZFM - Zona de Falla Matheux

**Magnitud**

- M = > 6.0
- M = 5.0 a 5.9
- M = 4.0 a 4.9
- M = 3.0 a 3.9
- M = 2.0 a 2.9

Escala: 2:500, 000



Fecha / Hora (UTC)	Mag.	Lat.	Lon.	Prof.	Inst.	Ubicación
2022-02-14 11:43:33	<b>3.3</b>	20.0° N	72.6° W	18 km	SGN	Haiti Region
2022-02-14 10:41:44	<b>3.0</b>	18.1° N	67.0° W	83 km	SGN	Mona Passage
2022-02-14 10:31:50	<b>2.8</b>	19.6° N	71.1° W	1 km	SGN	Dominican Republic Region
2022-02-14 10:06:26	<b>3.1</b>	20.2° N	71.3° W	30 km	SGN	Dominican Republic Region
2022-02-14 09:28:06	<b>4.1</b>	18.6° N	73.5° W	5 km	SGN	Haiti Region
2022-02-14 02:38:55	<b>3.5</b>	19.7° N	70.5° W	7 km	SGN	Dominican Republic Region
2022-02-13 17:58:21	<b>3.5</b>	19.0° N	69.8° W	83 km	SGN	Dominican Republic Region
2022-02-13 09:45:58	<b>3.3</b>	18.4° N	73.3° W	5 km	SGN	Haiti Region
2022-02-13 09:07:25	<b>4.1</b>	18.5° N	73.3° W	7 km	SGN	Haiti Region
2022-02-13 07:20:48	<b>2.9</b>	18.2° N	67.1° W	7 km	SGN	Mona Passage
2022-02-12 12:54:41	<b>3.3</b>	19.3° N	67.5° W	5 km	SGN	Mona Passage
2022-02-12 08:22:01	<b>2.4</b>	18.3° N	67.4° W	5 km	SGN	Mona Passage
2022-02-12 06:50:40	<b>2.5</b>	19.0° N	67.1° W	20 km	SGN	Mona Passage
2022-02-12 03:27:40	<b>3.1</b>	18.2° N	72.2° W	219 km	SGN	Haiti Region
2022-02-12 02:16:50	<b>3.2</b>	19.3° N	70.5° W	5 km	SGN	Dominican Republic Region
2022-02-11 13:12:20	<b>3.3</b>	18.5° N	72.6° W	5 km	SGN	Haiti Region
2022-02-11 01:06:02	<b>2.2</b>	17.6° N	67.1° W	5 km	SGN	Mona Passage
2022-02-11 00:02:14	<b>4.0</b>	17.6° N	72.2° W	16 km	SGN	Haiti Region
2022-02-10 18:44:13	<b>4.7</b>	19.3° N	67.9° W	5 km	SGN	Mona Passage
2022-02-10 17:02:01	<b>2.1</b>	18.0° N	67.1° W	9 km	SGN	Mona Passage
2022-02-10 09:59:29	<b>4.2</b>	18.6° N	73.6° W	9 km	SGN	Haiti Region
2022-02-10 03:26:53	<b>2.8</b>	18.0° N	68.7° W	155 km	SGN	Mona Passage
2022-02-09 17:27:46	<b>2.7</b>	19.1° N	67.7° W	5 km	SGN	Mona Passage
2022-02-09 06:35:44	<b>3.5</b>	18.4° N	74.1° W	5 km	SGN	Haiti Region
2022-02-08 23:17:39	<b>2.8</b>	19.7° N	71.1° W	11 km	SGN	Dominican Republic Region
2022-02-08 17:01:49	<b>3.9</b>	18.8° N	69.7° W	95 km	SGN	Dominican Republic Region
2022-02-08 13:04:20	<b>3.7</b>	19.6° N	71.5° W	7 km	SGN	Dominican Republic Region
2022-02-08 09:01:40	<b>3.6</b>	18.1° N	74.0° W	5 km	SGN	Haiti Region
2022-02-08 08:06:27	<b>3.2</b>	18.9° N	69.2° W	36 km	SGN	Dominican Republic Region
2022-02-08 05:12:29	<b>2.6</b>	18.2° N	67.8° W	72 km	SGN	Mona Passage

2022-02-08 01:27:48	<b>3.9</b>	18.4° N	73.3° W	19 km	SGN	Haiti Region
2022-02-08 00:29:05	<b>3.3</b>	18.3° N	73.3° W	5 km	SGN	Haiti Region
2022-02-07 11:15:14	<b>3.3</b>	18.4° N	69.4° W	6 km	SGN	Dominican Republic Region
2022-02-07 07:24:46	<b>2.1</b>	18.3° N	67.4° W	105 km	SGN	Mona Passage
2022-02-07 04:49:24	<b>3.7</b>	18.1° N	73.5° W	3 km	SGN	Haiti Region
2022-02-07 04:11:19	<b>3.0</b>	18.4° N	72.6° W	25 km	SGN	Haiti Region
2022-02-07 00:58:27	<b>2.8</b>	18.0° N	68.7° W	107 km	SGN	Mona Passage
2022-02-06 11:58:54	<b>2.9</b>	19.0° N	67.9° W	5 km	SGN	Mona Passage
2022-02-06 11:36:19	<b>2.6</b>	18.1° N	68.3° W	101 km	SGN	Mona Passage
2022-02-06 08:03:51	<b>3.2</b>	20.1° N	70.9° W	13 km	SGN	Dominican Republic Region
2022-02-06 05:11:14	<b>3.3</b>	19.9° N	72.5° W	7 km	SGN	Haiti Region
2022-02-06 03:21:05	<b>2.4</b>	19.0° N	70.5° W	83 km	SGN	Dominican Republic Region
2022-02-05 15:16:02	<b>3.8</b>	18.4° N	73.3° W	11 km	SGN	Haiti Region
2022-02-05 06:47:52	<b>3.3</b>	19.7° N	73.1° W	5 km	SGN	Haiti Region
2022-02-04 04:32:16	<b>3.3</b>	18.6° N	69.5° W	73 km	SGN	Dominican Republic Region
2022-02-03 22:08:04	<b>3.3</b>	18.6° N	70.2° W	35 km	SGN	Dominican Republic Region
2022-02-03 11:35:25	<b>2.9</b>	18.1° N	71.3° W	19 km	SGN	Dominican Republic Region
2022-02-03 10:17:24	<b>2.8</b>	19.6° N	70.3° W	9 km	SGN	Dominican Republic Region
2022-02-03 10:07:30	<b>3.3</b>	18.6° N	73.7° W	5 km	SGN	Haiti Region
2022-02-03 03:46:49	<b>3.5</b>	18.4° N	73.4° W	5 km	SGN	Haiti Region
2022-02-03 03:27:01	<b>2.9</b>	18.3° N	71.3° W	11 km	SGN	Dominican Republic Region
2022-02-03 03:11:00	<b>3.5</b>	18.4° N	73.3° W	5 km	SGN	Haiti Region
2022-02-03 03:05:26	<b>4.2</b>	18.5° N	73.3° W	5 km	SGN	Haiti Region
2022-02-02 20:18:04	<b>3.4</b>	19.2° N	67.2° W	5 km	SGN	Mona Passage
2022-02-02 19:16:33	<b>3.2</b>	18.4° N	70.4° W	1 km	SGN	Dominican Republic Region
2022-02-02 18:20:20	<b>3.6</b>	18.4° N	73.3° W	16 km	SGN	Haiti Region
2022-02-02 16:08:47	<b>3.9</b>	18.2° N	71.8° W	21 km	SGN	Dominican Republic Region
2022-02-02 10:03:19	<b>2.0</b>	18.0° N	67.1° W	5 km	SGN	Mona Passage

2022-02-02 08:30:48	<b>2.7</b>	18.3° N	71.3° W	5 km	SGN	Dominican Republic Region
2022-02-02 05:25:12	<b>2.2</b>	18.1° N	71.3° W	23 km	SGN	Dominican Republic Region
2022-02-02 04:37:01	<b>3.0</b>	20.3° N	71.0° W	10 km	SGN	Dominican Republic Region
2022-02-02 03:43:53	<b>3.8</b>	18.3° N	71.5° W	8 km	SGN	Dominican Republic Region
2022-02-02 00:56:23	<b>3.4</b>	19.2° N	69.8° W	5 km	SGN	Dominican Republic Region
2022-02-01 17:10:51	<b>3.7</b>	18.6° N	69.8° W	90 km	SGN	Dominican Republic Region
2022-02-01 12:06:29	<b>3.4</b>	19.8° N	71.0° W	9 km	SGN	Dominican Republic Region
2022-02-01 08:19:26	<b>2.9</b>	18.3° N	71.4° W	11 km	SGN	Dominican Republic Region
2022-02-01 08:08:28	<b>3.5</b>	19.8° N	71.0° W	8 km	SGN	Dominican Republic Region
2022-02-01 04:15:34	<b>3.1</b>	19.5° N	69.9° W	10 km	SGN	Dominican Republic Region
2022-02-01 03:20:20	<b>3.7</b>	19.5° N	70.8° W	5 km	SGN	Dominican Republic Region
2022-02-01 02:59:45	<b>3.7</b>	18.4° N	73.3° W	19 km	SGN	Haiti Region
2022-01-31 11:08:52	<b>3.5</b>	18.5° N	73.3° W	7 km	SGN	Haiti Region
2022-01-31 05:00:06	<b>2.7</b>	18.4° N	71.8° W	9 km	SGN	Dominican Republic Region
2022-01-31 04:57:04	<b>3.1</b>	18.2° N	71.0° W	5 km	SGN	Dominican Republic Region
2022-01-31 04:14:31	<b>3.2</b>	19.8° N	69.5° W	5 km	SGN	Dominican Republic Region
2022-01-31 03:16:46	<b>4.4</b>	18.3° N	71.4° W	6 km	SGN	Dominican Republic Region
2022-01-30 23:42:22	<b>3.1</b>	19.2° N	69.7° W	5 km	SGN	Dominican Republic Region
2022-01-30 18:54:35	<b>3.7</b>	18.4° N	73.3° W	11 km	SGN	Haiti Region

2022-02-03 03:27:01	<b>2.9</b>	18.3° N	71.3° W	11 km	SGN	República Dominicana
2022-02-03 03:11:00	<b>3.5</b>	18.4° N	73.3° W	5 km	SGN	Haití
2022-02-03 03:05:26	<b>4.2</b>	18.5° N	73.3° W	5 km	SGN	Haití
2022-02-02 20:18:04	<b>3.4</b>	19.2° N	67.2° W	5 km	SGN	Canal de la Mona
2022-02-02 19:16:33	<b>3.2</b>	18.4° N	70.4° W	1 km	SGN	República Dominicana
2022-02-02 18:20:20	<b>3.6</b>	18.4° N	73.3° W	16 km	SGN	Haití
2022-02-02 16:08:47	<b>3.9</b>	18.2° N	71.8° W	21 km	SGN	República Dominicana
2022-02-02 10:03:19	<b>2.0</b>	18.0° N	67.1° W	5 km	SGN	Canal de la Mona
2022-02-02 08:30:48	<b>2.7</b>	18.3° N	71.3° W	5 km	SGN	República Dominicana
2022-02-02 05:25:12	<b>2.2</b>	18.1° N	71.3° W	23 km	SGN	República Dominicana
2022-02-02 04:37:01	<b>3.0</b>	20.3° N	71.0° W	10 km	SGN	República Dominicana
2022-02-02 03:43:53	<b>3.8</b>	18.3° N	71.5° W	8 km	SGN	República Dominicana
2022-02-02 00:56:23	<b>3.4</b>	19.2° N	69.8° W	5 km	SGN	República Dominicana
2022-02-01 17:10:51	<b>3.7</b>	18.6° N	69.8° W	90 km	SGN	República Dominicana
2022-02-01 12:06:29	<b>3.4</b>	19.8° N	71.0° W	9 km	SGN	República Dominicana
2022-02-01 08:19:26	<b>2.9</b>	18.3° N	71.4° W	11 km	SGN	República Dominicana
2022-02-01 08:08:28	<b>3.5</b>	19.8° N	71.0° W	8 km	SGN	República Dominicana
2022-02-01 07:25:22	<b>2.8</b>	18.1° N	68.0° W	80 km	SGN	Canal de la Mona
2022-02-01 06:40:11	<b>1.6</b>	18.1° N	67.0° W	15 km	SGN	Canal de la Mona
2022-02-01 04:15:34	<b>3.1</b>	19.5° N	69.9° W	10 km	SGN	República Dominicana
2022-02-01 03:20:20	<b>3.7</b>	19.5° N	70.8° W	5 km	SGN	República Dominicana
2022-02-01 02:59:45	<b>3.7</b>	18.4° N	73.3° W	19 km	SGN	Haití

PROVINCIAS	SISMOS	2.0 a 2.9	3.0 a 3.9	4.0 a 4.9	5.0 a 5.9	6.0 a 7.0
BARAHONA	1	1				
PERDENALES						
INDEPENDENCIA	3	2	1			
BAHORUCO						
SAN JUAN						
AZUA						
PERAVIA	1		1			
SAN JOSE DE OCOA						
SAN CRISTOBAL						
ELIAS PIÑA						
SANTO DOMINGO						
DISTRITO NACIONAL						
SAN PEDRO DE MACORIS						
LA ROMANA						
HATO MAYOR						
EL SEIBO	1		1			
LA ALTAGRACIA						
MONTE PLATA	2		2			
SANCHEZ RAMIREZ						
LA VEGA						
DUARTE	1		1			
HERMANA MIRABAL						
ESPAILLAT						
SAMANA						
MARIA TRINIDAD SANCHEZ	1		1			
SANTIAGO	1		1			
VALVERDE	2	2				
DAJABON						
MONSEÑOR NOUEL	1	1				
PUERTO PLATA	2		2			
MONTE CRISTI	1		1			

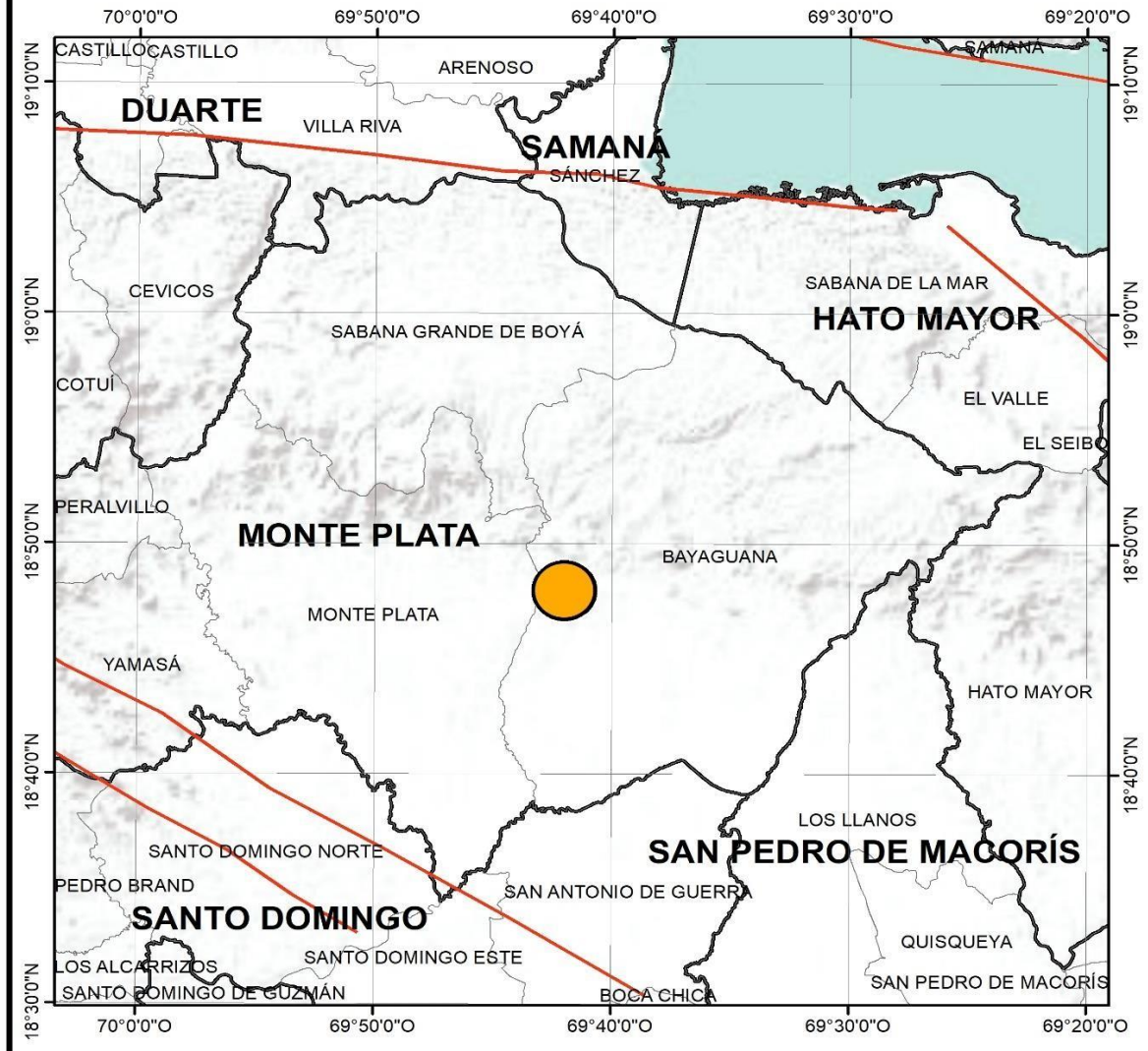
# Sismos más fuertes



SERVICIO GEOLOGICO NACIONAL  
REPÚBLICA DOMINICANA

## Evento Sísmico

Fecha / Hora	Coordenadas	Profundidad	Magnitud
2022-02-08 / 13:01:49	18.8 N 69.7 W	95 Km	3.9





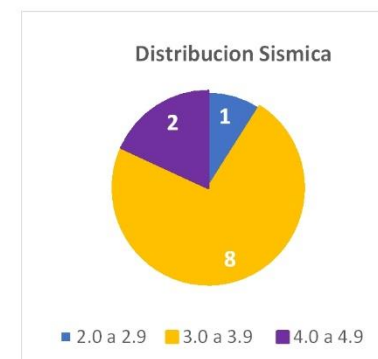
# Zona de más actividad sísmica



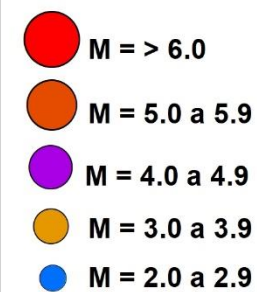
SERVICIO GEOLÓGICO NACIONAL

REPÚBLICA DOMINICANA

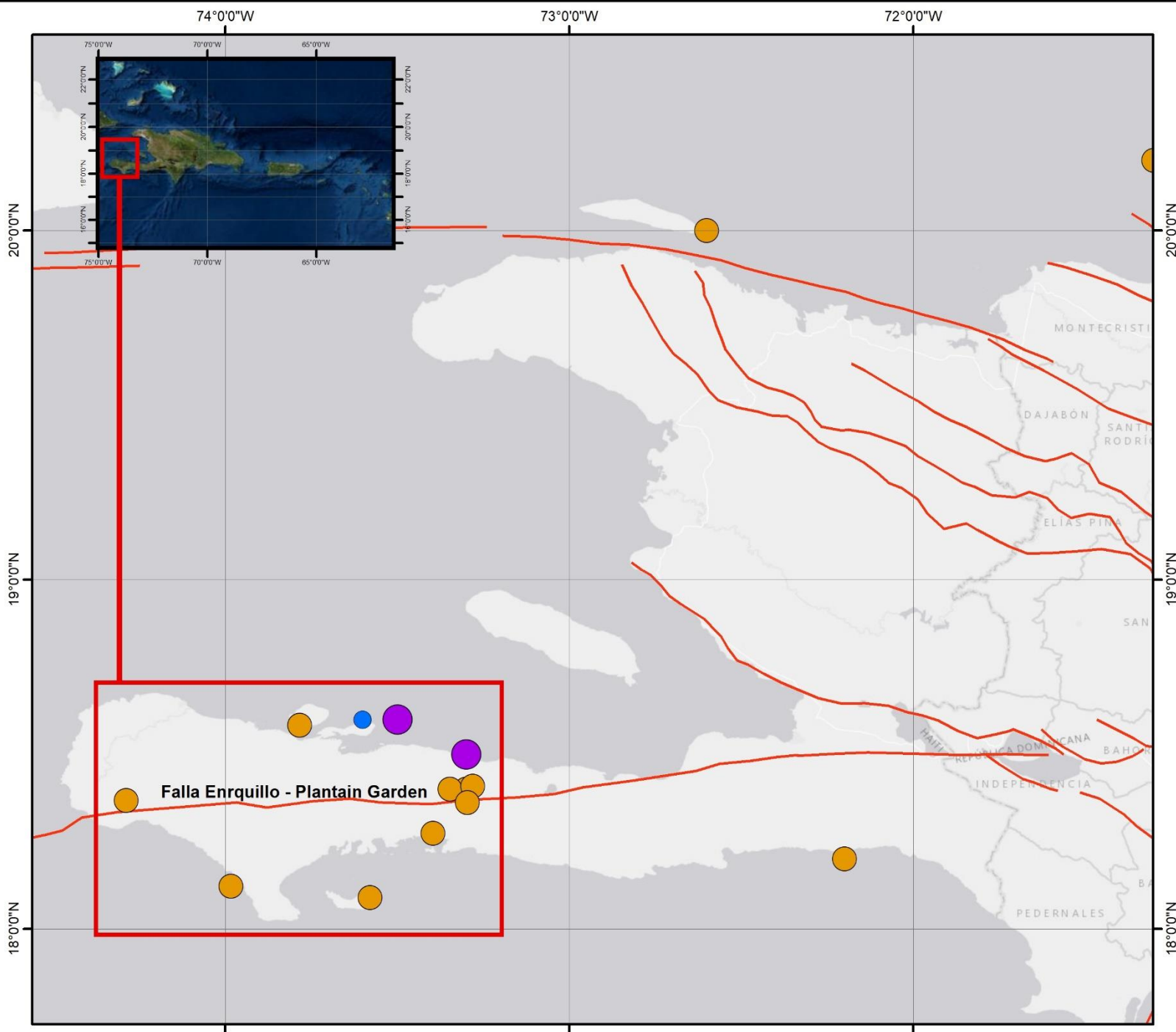
## Zona de mas actividad sismica



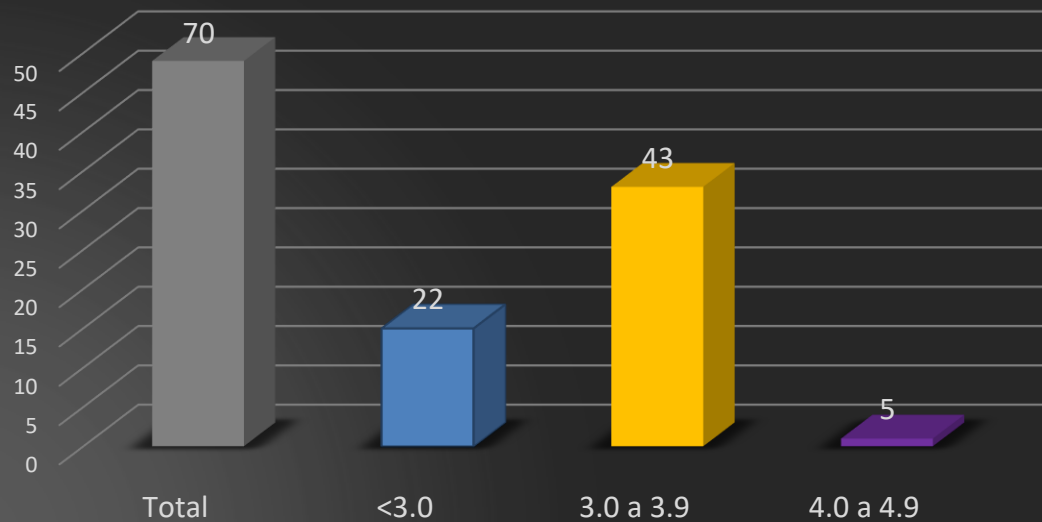
### Magnitud



Escala: 2:500,000

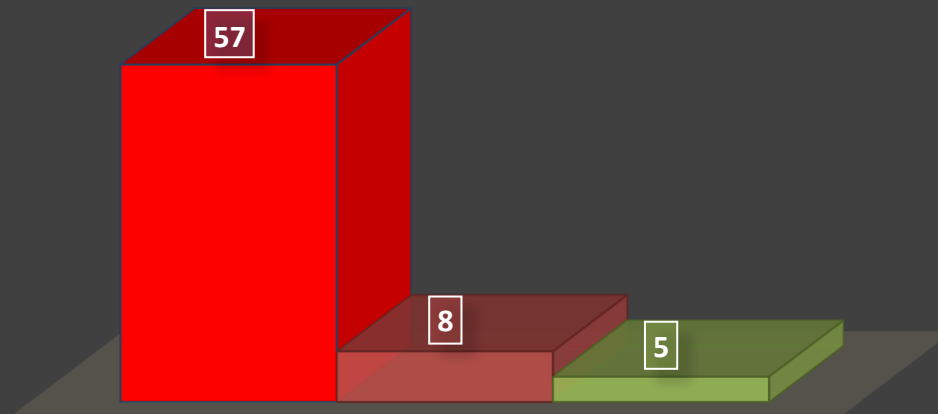


### DISTRIBUCIÓN POR MAGNITUD



### DISTRIBUCIÓN POR PROFUNDIDAD

■ <50 (Km)   ■ 50 - 100 (Km)   ■ 101 - 200 (Km)



# DISTRIBUCIÓN POR REGION

